

Instruction Sheet

Minimate Pro™ Monitoring Unit

Linear Microphone

The Minimate Pro monitoring unit's Linear Microphone automates the monitoring of air overpressure for any application requiring dual monitoring. The Minimate Pro monitoring unit combines air overpressure and vibration monitoring in the same unit, making it a cost effective and flexible device for these applications.

The Linear Microphone is calibrated to the ISEE-2022 standard with a frequency measuring range from 2 to 250 Hertz and an amplitude range up to 500 Pascals (0.0725 psi, or 148 dB).



Range of Applications

- Blasting
- Construction
- Demolitions
- Dynamic Compaction
- Quarries
- Tunnels and Subways

Tools and Materials Required

- Minimate Pro4 monitoring unit(P/N: 720A2301) or
- Minimate Pro6 monitoring unit(P/N: 720A2401)
- Linear Microphone(P/N: 720A1801)
(stand and windscreen included)
- Microphone Stand Extension Rod (28 cm/11 in)(P/N:400-720020-000)
- Extension cables, as required:
 - 30 m (98.4 ft)(P/N: 720A3301)
 - 75 m (246.1 ft)(P/N: 720A3302)
 - Custom Cable Connector Assembly(P/N: 720A3305)
 - Custom Length Extension Cable(P/N: 301-000034-000)
- THOR software (free version included with any Minimate Pro monitoring unit purchase) or
- THOR Advanced software (Additional license purchase required) . . .(P/N: 72300201)

Physical Installation

(for a detailed description see page 4.)

1. If required, assemble the 3-piece microphone stand (see Figure 1. on page 4).
2. Point the microphone in the direction of the pressure source.
(If required, place the windscreen on the end of the microphone.)
3. Minimate Pro4 monitoring unit : Connect the microphone to red port indicated with Channel 4, Pressure.
Minimate Pro6 monitoring unit : Connect the microphone to either of the ports indicated with Channel 1-3 Vibration or Channel 4-6 Pressure.
4. Make sure the Minimate Pro monitoring unit has the proper **Setup File** (see THOR Software Setup below) and then perform a sensor check by pressing the **Sensor Check** key on the keypad.

Specifications

Field	Values
Response Standard	ISEE - 2017
Frequency Weighting	Linear
Frequency Range	2 Hz - 250 Hz
Amplitude Range	Up to 500 Pa (0.0725 psi, or 148 dB)
Trigger Levels	2 to 500 Pa (0.00029 to 0.0725 psi, or 100 dB(L) to 148 dB(L))
Sample Rates	1,024 - 4,096 S/s
Resolution	0.0156 Pa (0.05 dB)
Cable Length	2 m (6.6 ft)
Maximum Cable Length	75 m (246.1 ft)
Temperature Range	-40° to 50°C (-40° to 122°F)

Calibration

Note: The Linear Microphone must be sent to a manufacturer certified calibration facility, or InstanTEL headquarters for calibration. Please visit our calibration facility locator at www.instanTEL.com. InstanTEL recommends calibrating all air overpressure microphones once a year and provides the Next Calibration date on the unit and sensors. The calibration process is the only method to ensure the instrument is performing as it was designed and accurately measuring the air overpressure it receives.

Using a manufacturer certified facility ensures the proper procedures are followed when calibrating your microphone. This removes any uncertainty associated with the reliability and measurement accuracy of your microphone. It also helps ensure the integrity of the measured recorded events if they are ever called upon as evidence in a court of law. Using unauthorized facilities may have negative legal consequences if the reference equipment is not traceable, the proper procedures are not followed or if the certification documents are incomplete. Please visit our calibration facility locator at instanTEL.com.

Minimate Pro Monitoring Unit Setup

The four available record modes are:

1. Waveform (Compliance Setup: records up to 9,000 seconds at 512, 1024, 2048 S/s, 26,100 seconds at 4096 S/s, Advanced Setup: records up to 12,300 seconds at 8,192 S/s, 6,190 seconds at 16,384 S/s, 3,180 seconds at 32,768 S/s, and 125 seconds at 65,536 S/s once it has been triggered)
2. Waveform Manual (can record up to 24 hours long at 1,024 S/s with extended memory).
3. Histogram (2 sec. to 1 hour recording intervals).
4. Histogram-Combo records both Waveform and Histogram components of an event.

THOR Software Setup

The Linear Microphone can be configured using THOR software by Instantel. Once configured, THOR software must send the microphone's setup file to update the Micromate unit. Depending on the active THOR software license, the interface will vary.

THOR Software Compliance License

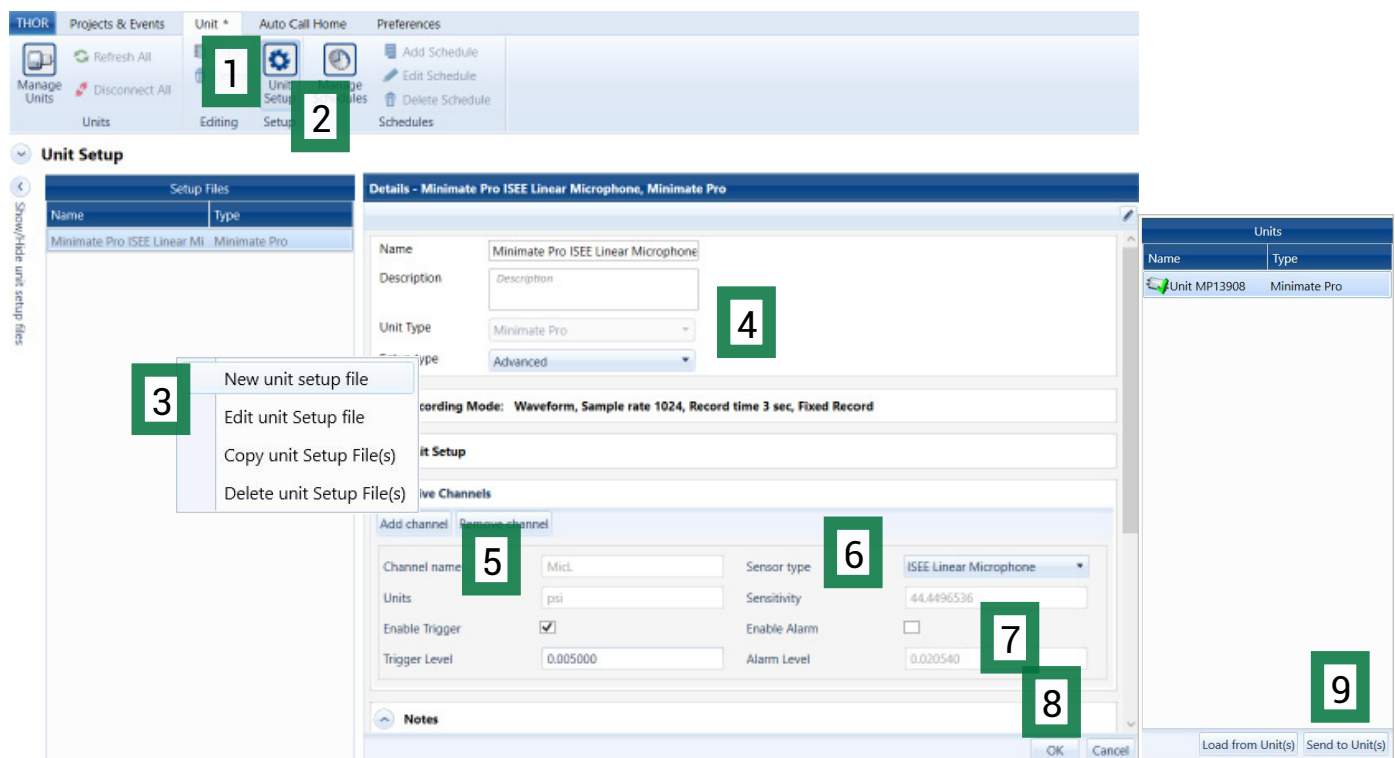
Installation Steps:

1. Click on the **Unit Tab**.
2. Click on the **Unit Setup** icon.
3. In the Unit Setup section, right-click and select **"New unit setup file"**.
4. Fill in the details and select **Unit Type: Minimate Pro**.
5. Under Active Sensors, add the necessary sensors by clicking the **Add Sensor** button.
6. Under Sensor select **ISEE Linear Microphone**.
7. Fill in the optional **Trigger** and **Alarm** settings.
8. Click **OK** (save the changes in the popup dialog box).
9. Send the Setup File to the unit by selecting the unit from the list and clicking the **"Send to Unit(s)"** button.

THOR Software Advanced License

Installation Steps:

1. Click on the **Unit Tab**.
2. Click on the **Unit Setup** icon.
3. In the Unit Setup section, right-click and select **"New unit setup file"**.
4. Fill in the details and select **Unit Type: Minimate Pro**, then **Setup Type: Advanced**.
5. Under Active Channels add the necessary channels by clicking the **Add Channel** button.
6. Under Sensor Type select **ISEE Linear Microphone**.
7. Fill in the optional **Trigger** and **Alarm** settings.
8. Click **OK** (save the changes in the popup dialog box).
9. Send the Setup File to the unit by selecting the unit from the list and clicking the **"Send to Unit(s)"** button.



A visual display of the THOR software installation steps for a Linear Microphone

Installing the Linear Microphone

The microphone installation procedures are based on ISEE field practice guidelines for blasting seismographs. This section illustrates the installation procedures recommended by InstanTel. Your particular monitoring activities may employ one, or a combination of all, of the following procedures.

The Linear Microphone is supplied with a 3-piece microphone stand. The top section has a clip to hold the microphone, the extension section is threaded at both ends and the bottom section is pointed to assist in the installation. When the three pieces are assembled the microphone stand is approximately 0.8 m (33 in) tall. If the air overpressure is to be monitored at a height greater than 0.8 m (33 in), additional extension sections can be purchased. (Microphone Stand Extension Rod, P/N: 400-720020-000)

Installation Steps:

1. Assemble the microphone stand at the desired location (see Figure 1.). Section 1 has a pointed tip to drive the stand into the ground. Section 2 has a male and female thread. Screw in the female threaded end of section 2 into the male threaded end of section 1. Section 3 contains the microphone clip. Screw in the female threaded end of section 3 into the male threaded end of section 2.
2. Push the pointed end of the microphone stand into the ground. If the ground is too hard, use a rubble mallet to install the microphone stand.
Note: Do not use a metal hammer or other hard object as it may damage the top of the microphone stand.
3. Attach the windscreen to reduce false triggering caused by wind. The windscreen attenuates the microphone reading by approximately 0.2 dB.
4. Install the Linear Microphone in the clip at the top of the microphone stand and point the microphone in the direction of the noise source.
5. Ensure that the microphone cable is securely attached to the Minimate Pro unit.
6. Press the **Sensor Check** key on the Minimate Pro unit ensuring the microphone is properly attached and has passed the Sensor Check.



Figure 1.
3-Piece
Microphone Stand



Figure 2.
Soft Ground Installation



Figure 3.
Hard Ground Installation



Figure 4.
Installing the Microphone

Warranty

InstanTel products come with a limited one-year warranty against defects in materials or workmanship unless otherwise stated. The warranty begins on the date of shipment from the InstanTel factory to the customer and is subject to certain exclusions and conditions as stated below. Monitoring units and sensors will have the warranty extended for a second year if they are returned to the InstanTel factory for service and calibration within 30 days of the 'Next Calibration' date printed on the calibration label located on the product.

If, within a period of one year from the date of shipment to a customer, the instrument fails to perform in accordance with InstanTel's published specifications under normal use and operating conditions, it will be repaired or replaced at the sole discretion of InstanTel free of charge. Components subject to fair wear and tear in regular use, as solely determined by InstanTel, are excluded from this coverage. This warranty will not apply if the damage or malfunction occurs due to (i) adjustments, additions, alternations, abuse, misuse or tampering of the instrument; (ii) instrument operation or use contrary to the operating instructions; (iii) power fluctuations; or (iv) any other cause not within the cause or control of InstanTel. If inspection by InstanTel fails to disclose any defect covered by this limited equipment warranty, the instrument will be repaired or replaced at customer's expense and InstanTel's regular service charges will apply. This warranty is non-transferable.

Any shipments returned directly to InstanTel must have prior approval, and all packages must display the Return of Material Authorization (RMA) number issued by InstanTel. Shipping charges to InstanTel's factory will be paid by the customer and return shipment to the customer will be paid by InstanTel.

To protect your warranty, you must complete and return a Warranty Registration Certificate, or complete the online Warranty Registration Form, within ten days of purchase. Products will be assumed out of warranty if no warranty card is on file at InstanTel. Retain this warranty statement and the proof of purchase for your records.

Except for the foregoing limited equipment warranty, InstanTel makes no other warranties and hereby disclaims and excludes all other warranties, whether statutory, express or implied, whether arising under law or equity or custom or usage, including any implied warranty of merchantability, fitness for a particular purpose, non-infringement, satisfactory quality, or quiet enjoyment, and any warranty that the product supplied may not be compromised, or that the product will in all cases provide the function for which it is intended.

EC Warning

This is a Class B product. In a domestic environment this product may cause radio interference in which case the user may be required to take adequate measures.